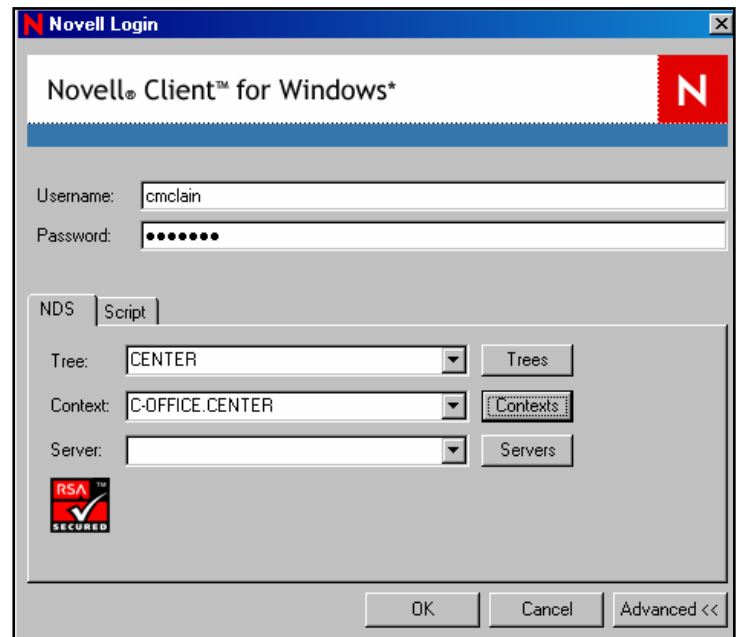


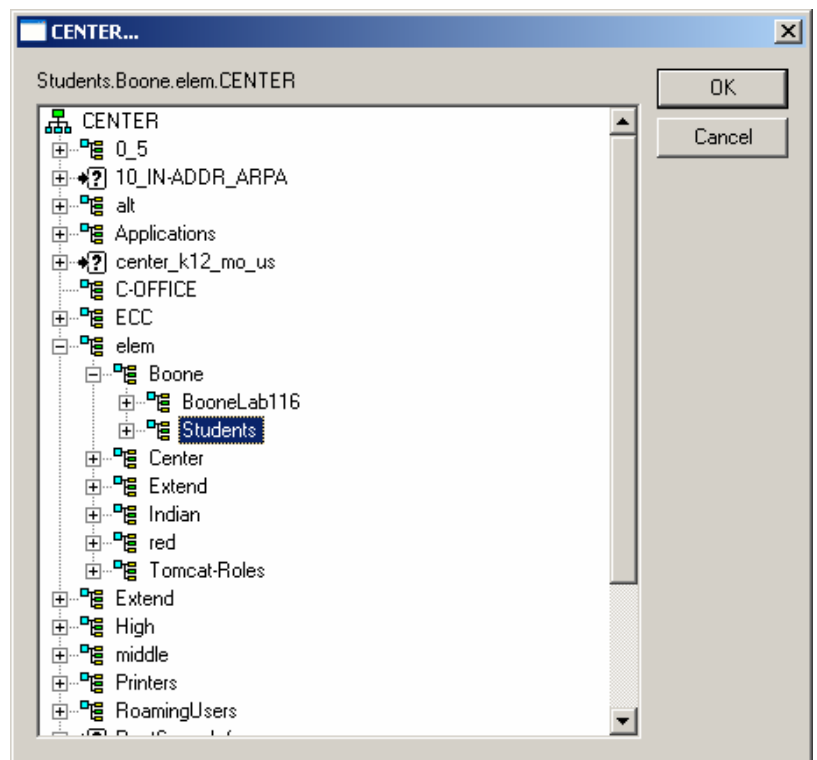
Can't get your students logged in?

Students can't log in? Try this . . .

1. Enter your username and password.
2. Click the Advanced button.
3. Click the Context button.



4. Here you will need to find your context.
 - Click the plus signs to expand your level's context - elem, middle or High.
 - Find your building, click the plus sign to expand it.
 - Finally, select the Students context.



5. Finally, click OK again to log in.