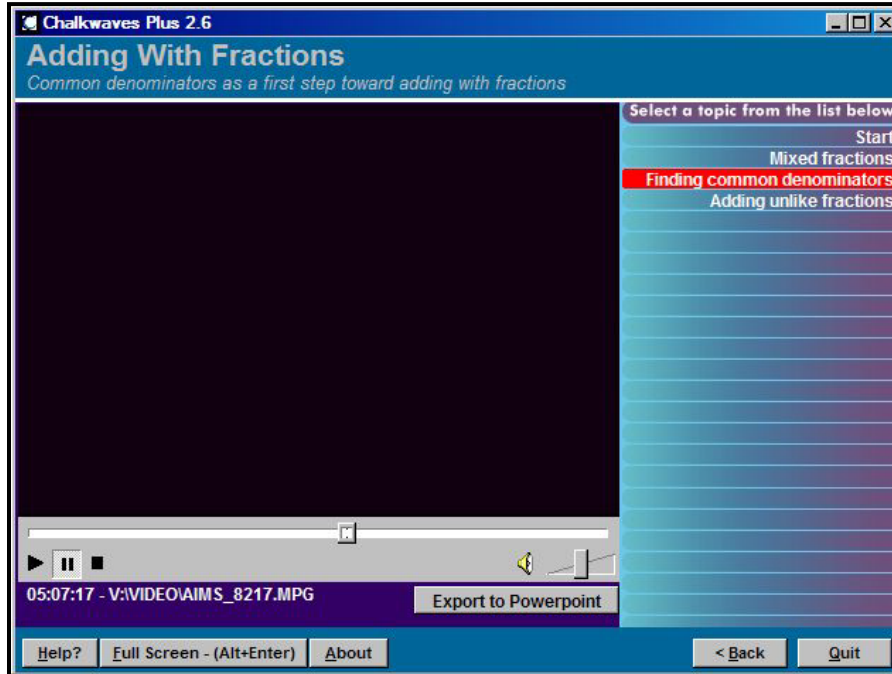
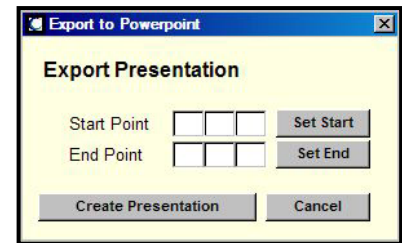


Exporting Chalkwaves to PowerPoint



If you would like to capture a portion of video from Chalkwaves and use it in a PowerPoint presentation there is a button that allows you to export to PowerPoint.

1. Click the **Export to PowerPoint** button.
2. Set the start and stop points for the video clip.
 - a. Click **Set Start** where you want the video to start.
 - b. **Set End** either by watching the video until the stop point arrives. Then click Set End.
 - b. Or pause the video. Use the bottom scroll bar to scroll to the point in the video you want as the end point.
3. Click Create Presentation. PowerPoint will automatically open with your Chalkwaves clip inserted on a slide.
4. Continue building your PowerPoint presentation.
5. View the slide show. *The Chalkwaves clip won't work unless you view the slide show!*



Were you able to see the Chalkwaves clip?

Yes? Ahh – great! 😊

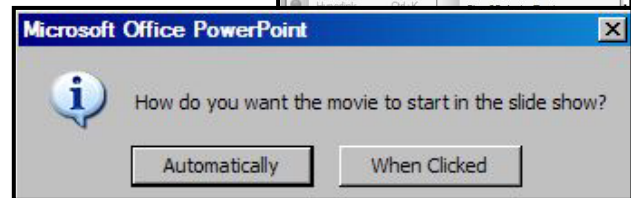
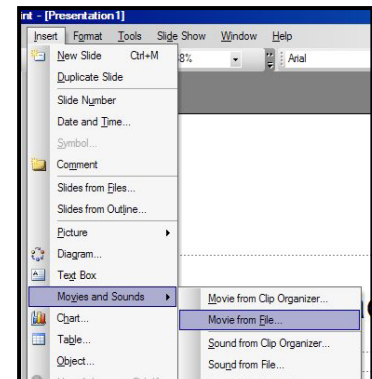
No? Oh no! Just one more quick thing to fix it.

1. Open My Computer, Vol.3 on Center3.
2. Open the Fix_MP9 folder
3. Double click the Fix_MP9.bat. A black screen pops up – give it a few seconds, it will run a patch and fix what needs to be fixed.

Inserting Clips and Pictures from United Streaming into PowerPoint

United Streaming is a great place to find videos and pictures to insert into PowerPoint. Here what you need to do:

1. Go to <http://www.unitedstreaming.com>. Search for **and download** a video clip. (Need help? Go to <http://www.center.k12.mo.us/edtech/help/streaming/downloading.pdf>)
2. Open PowerPoint.
3. Go to Insert, Movies and Sounds, Movie from File
4. Navigate to the location of the saved video.
5. Select the clip you want in the PowerPoint. Click OK.
6. Finally a window opens asking how you want your clip to be played – automatically or when clicked.
7. Finish making your PowerPoint.



Don't forget about images from United Streaming. Click Learning Tools to access the Image Library and Clip Art Gallery. Search and save pictures as normal.

