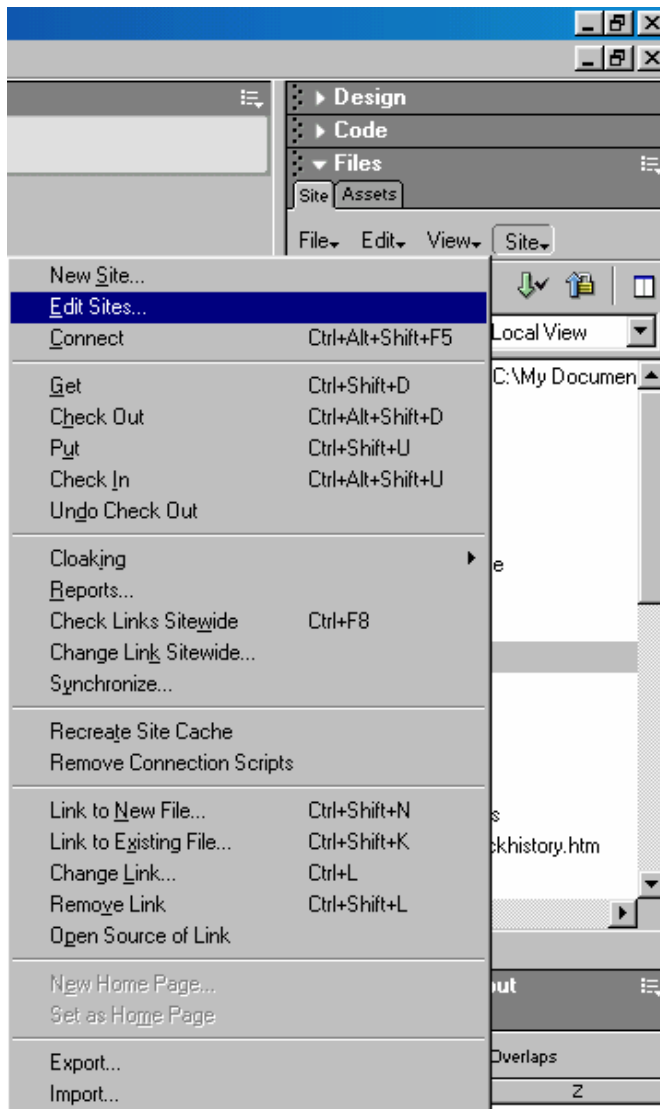


Uploading your website with Dreamweaver

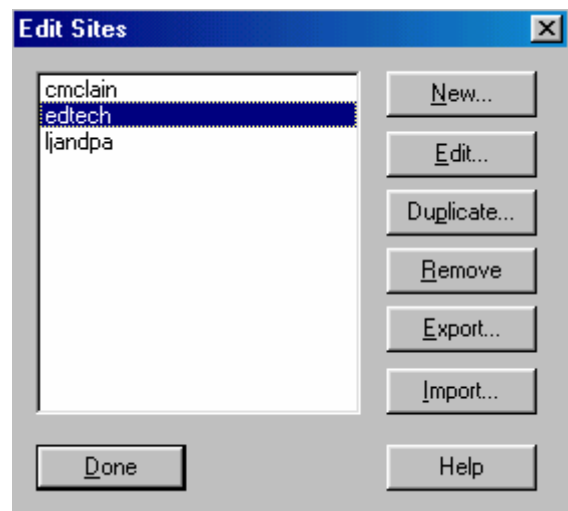
You are able to automatically upload your site with Dreamweaver. Dreamweaver can also synchronize your site so that what is on your local computer is exactly the same as what is online.

Step by step setting up the account

Set up the network/server function in the Site Definition. To do this choose Site>Edit Sites.



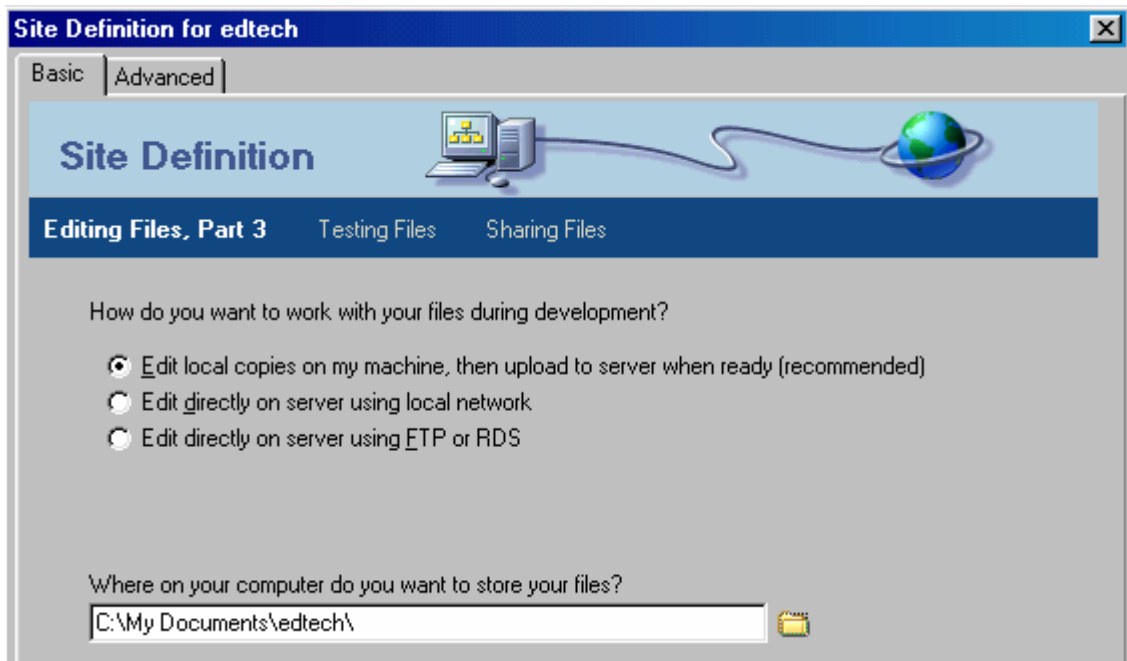
When the Edit Sites window opens, select the site you want to work on and click on "edit".



The window that opens is one that we used with our practice sites.

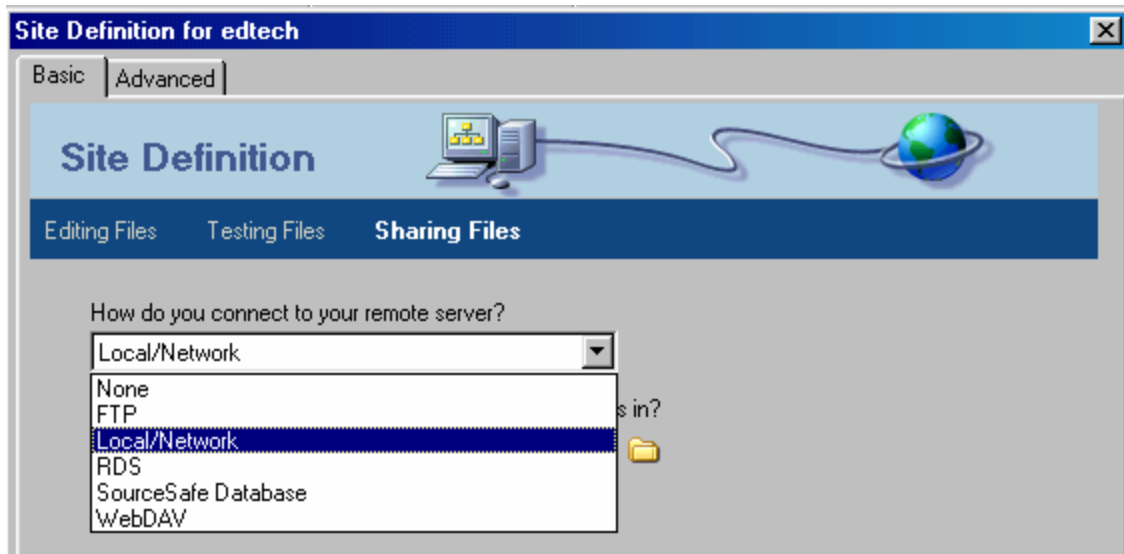
- Leave the site name the same.
- Leave the choice "No I do not want to use server technology" and click "Next".

- Make sure the next page tells the location of your local copy (on your H drive) and press “Next”.

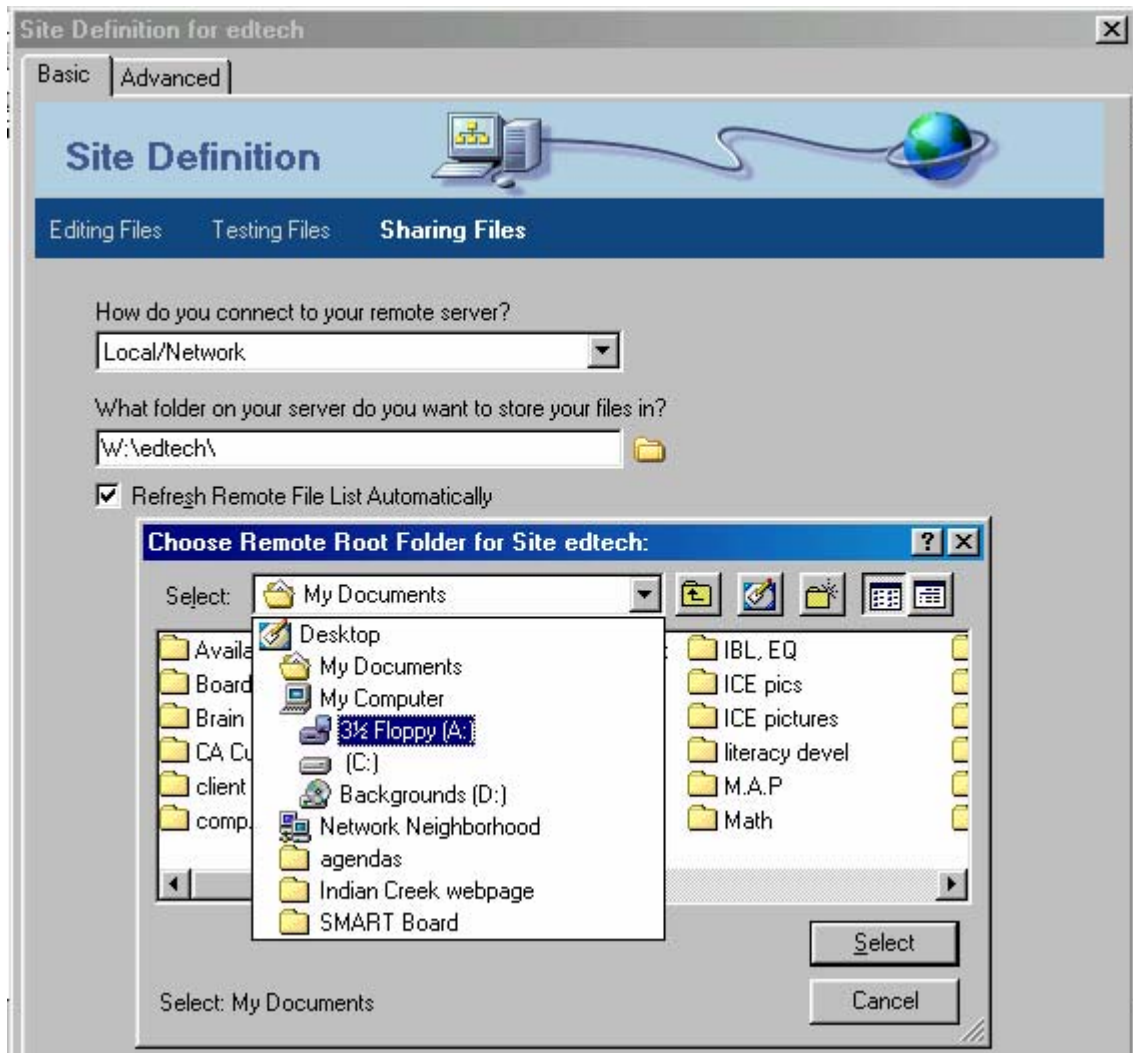


The next window is where you will enter the information to where you will be posting your website.

- Under “How do you connect....” click the drop down arrow and select “Local/Network”.



- Then click the folder under “What folder on your server . . .” and navigate to your W drive.



The next window stays the same with “No, do not enable check in and check out”. Click “next” again and you should see a confirmation that your account has been set up. You can click “Done” in this window and then “Done” again in the next window and your computer should be set up to upload within Dreamweaver.

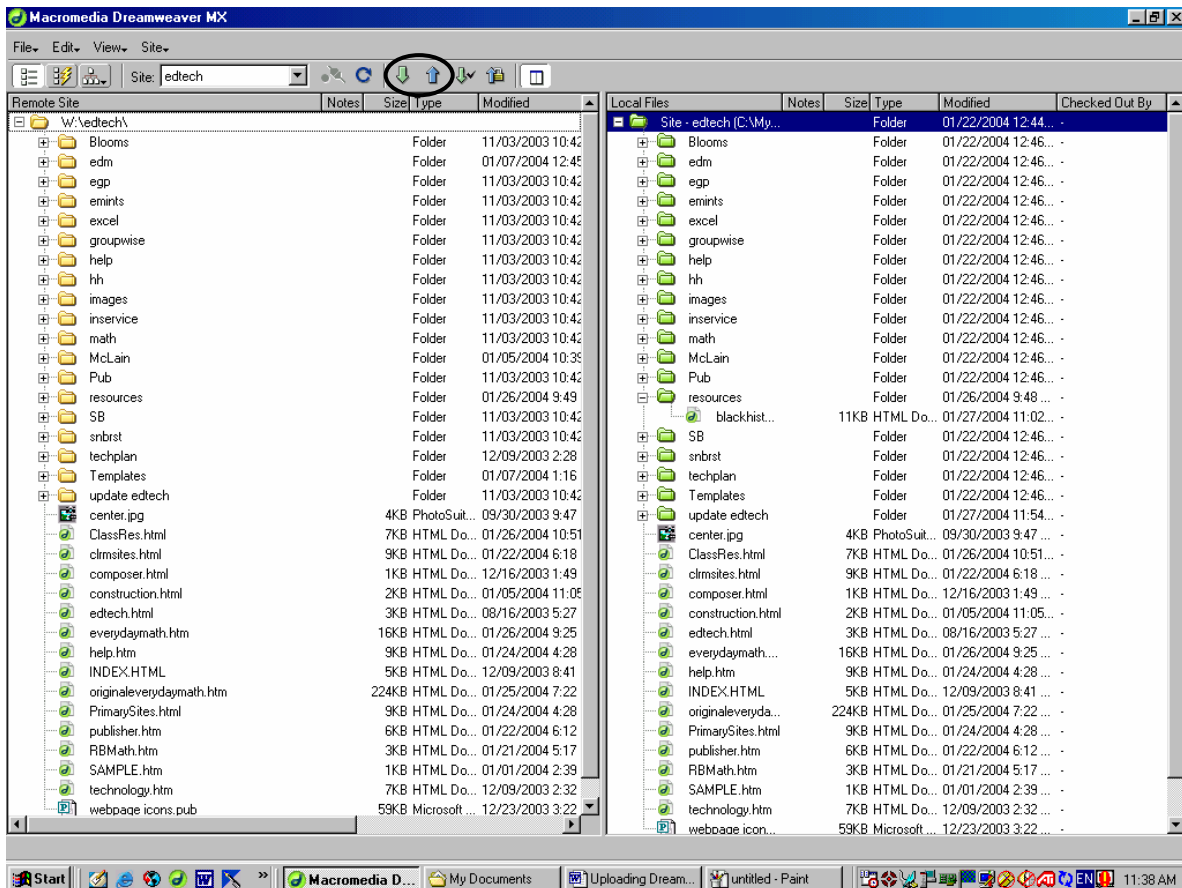
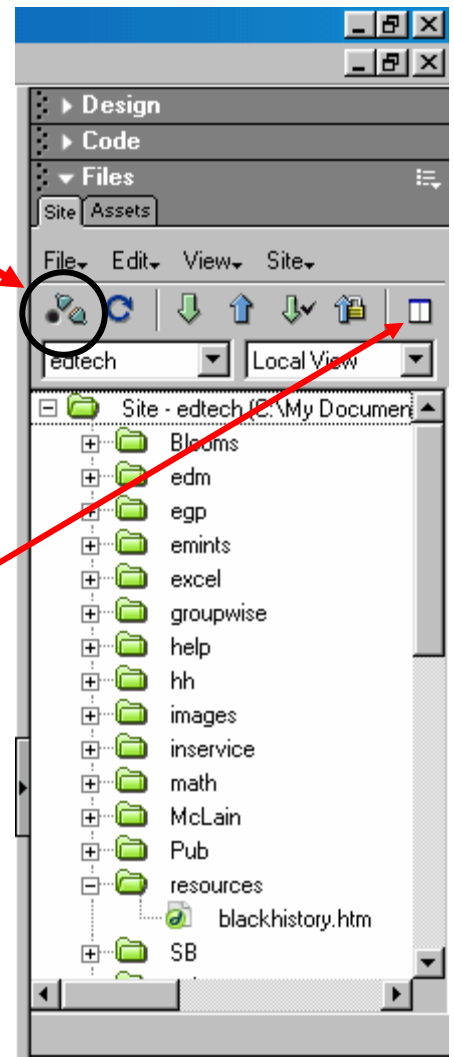
Working and Uploading Your Site

Now as you work you will be able to replace pages automatically when you finish editing them, as long as you are connected to the server. To be sure you are connected you should click on the picture of the two plugs on the top right on the File Toolbar.

- If you are able to click on the icon, it will open a menu where you will be able to define the remote site.
- If you are not able to click the icon, you are already connected to the remote site.

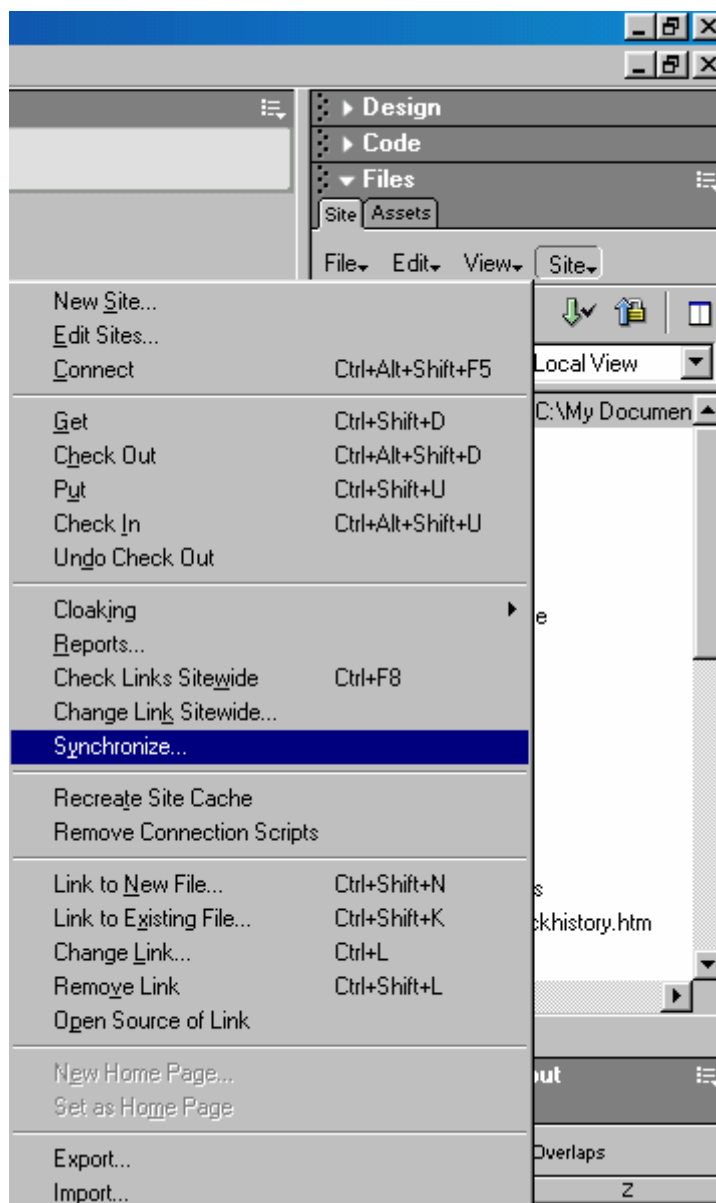
If you want to see BOTH the local and remote site at the same time, you can expand this window using the button on the far right. Click it once will expand the window and click it again will close it back up.

In the "Files" window on the right you will see a blue up arrow and a green down arrow. If there is something on your computer that you want to place on the server, you highlight it and then click the blue arrow. It will replace the file on the server. If there is something on the server that you would like to download to your machine, find it in the remote window, highlight it and click the green down arrow. The file will be sent to your local machine and will replace anything of the same name.



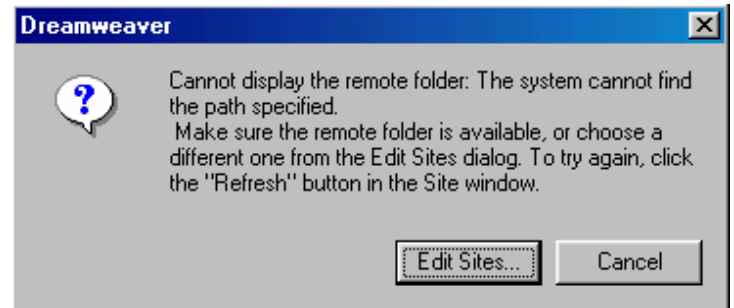
Synchronize

If you have done a lot of work on your site and just want the whole thing to be updated so that what is on your local machine is the same as what is online, you can choose Site > Synchronize. Dreamweaver compares what is on your computer with what is on the server. Everything is date stamped, so it just replaces whichever files have a new date on them. It is always good to keep the same set of files on your computer that are on the server. If you are using more than one local computer (a laptop, school computer) you can start editing by synchronizing your site. That way whatever you are working on will be the latest copy that is online. This will prevent you from editing an old copy of a file and replacing a newer version by accident.



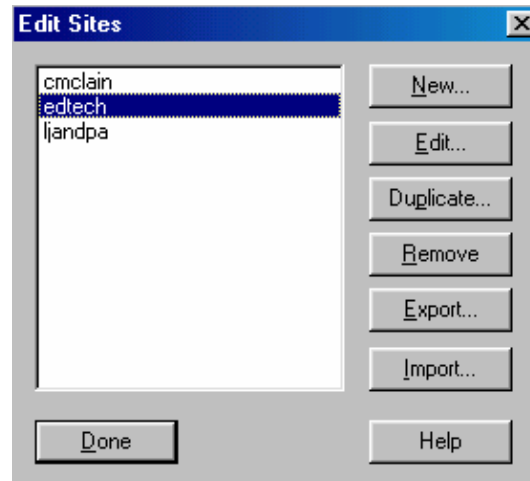
Working on your site when not connected to the server

If you choose to work on your website from your laptop or from home while not connected to the server, Dreamweaver will try to locate the server anyway. You will see a message such as this:



What you need to do is change the settings so Dreamweaver knows there is no server connection. Click "Edit Sites".

Select your website and click "Edit".



The easiest way to disconnect Dreamweaver from the server connection is to:

- Click the "Advanced" tab
- Select "Remote Info"
- Click the pull down menu next to the access blank and select "None".
- Click "OK", then "Done".

Now you will be able to work on your website while not connected to the server without getting the message that the remote folder can't be found.

