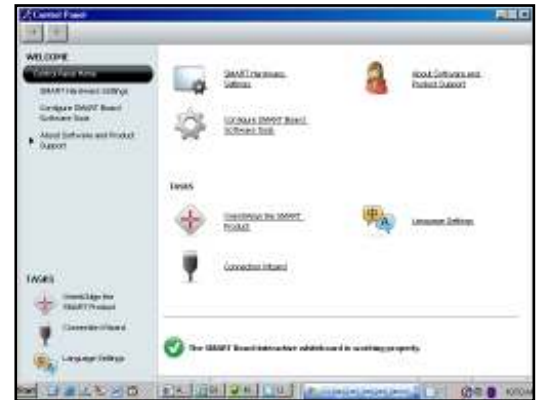


Have you tried changing a stylus color or making a stylus a highlighter?

Open the Control Panel:

1. Select the SMART Hardware settings.

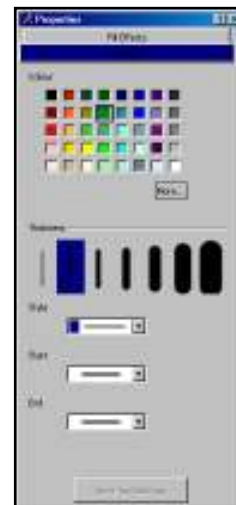


2. Select the color of stylus you want changed.



3. Select the line color and line thickness.

4. If you want to make a highlighter, click the Fill Effects button. Select the object transparentness. If not, just skip on to step 5.



5. Click the Save Tool Settings button.