

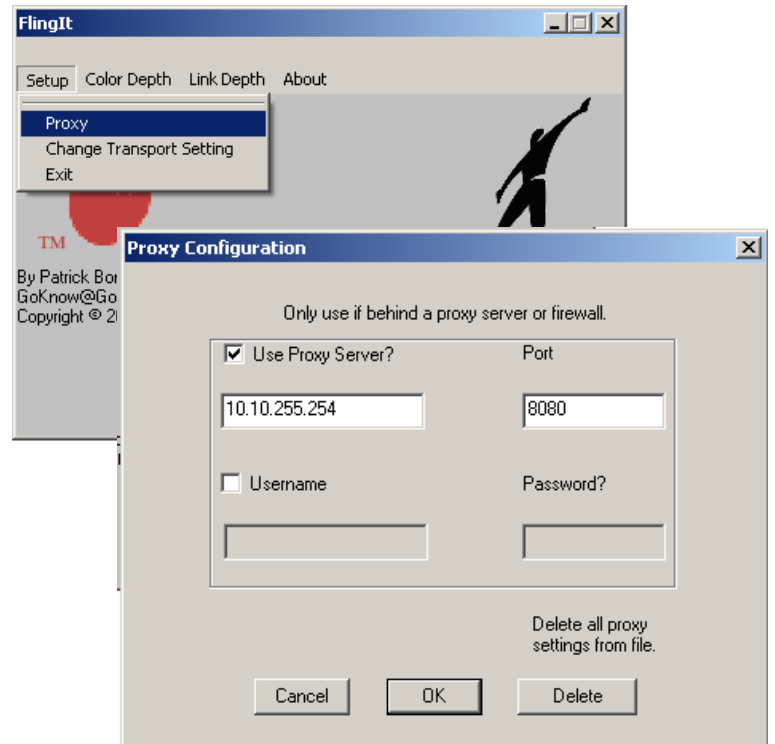
Using FlingIt



After finding the site you want to Fling, click the FlingIt icon

The FlingIt window pops up. There are really only two settings you need to keep track of with FlingIt. The first one is the Proxy settings. The picture to the right has the number settings.

Make sure the check mark stays checked – sometimes it doesn't!!



The second setting is the number under the link depth. I would think this would normally stay at 1. The more pages you have the longer it take to build the database to sync the site.

